

FASTPlaque™

Innovative tests for the diagnosis and drug susceptibility testing of tuberculosis

Tuberculosis (TB) remains a major global public health problem. In many countries, diagnosis still relies on traditional methods that are either slow or insensitive.

- **FASTPlaqueTB™** is a rapid and sensitive diagnostic test that can improve TB case detection.

Rifampicin is a critical drug in short-course chemotherapy for tuberculosis. Resistance to rifampicin is considered a marker for multi-drug resistance, and is associated with poor treatment outcome.

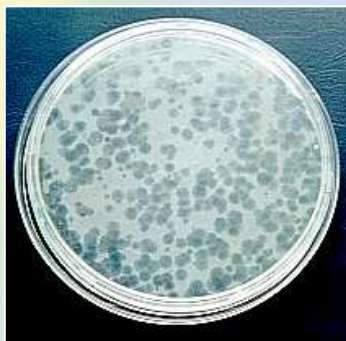
- **FASTPlaque-Response™** is a rapid test to determine rifampicin resistance in TB directly from sputum in 2 days.

Test principle

- Bacteriophage infect viable TB bacilli
- A potent virucide destroys all bacteriophage that have not infected TB bacilli
- Bacteriophage continue replication in viable TB bacilli and are released by cell lysis to re-infect non-pathogenic Sensor cells
- Zones of clearing (plaques) on a lawn of Sensor cells signify a positive result

Detection: measured by presence of viable TB bacilli in sputum

Rifampicin resistance: measured by viability of TB bacilli in the presence of rifampicin



FASTPlaque™ features

- Rapid: results within 48 hours
- Sensitive and specific detection
- Detects viable TB bacilli
- Simple, manual method: no specialised equipment needed
- Visual readout

FASTPlaqueTB™

FASTPlaque-Response™

NOA Antimicrobial Supplement*

Kit size

50 tests /kit

25 tests /kit

5 vials

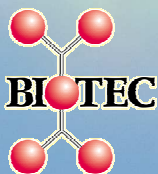
Product code

5/100

5/200

5/250

* Helps reduce contamination in FASTPlaque tests. 5 vial sufficient for 1 kit.



www.biotec.com

BIOTEC Laboratories Ltd., 32 Anson Road, Martlesham Heath, Ipswich, IP5 3RG, UK

Tel: +44 (0) 1473 612158 Fax: +44 (0) 1473 611476 Email: sales@biotec.com

